

NDF85-38 / NDF100-38

Dual Fuel Burner

722kW – 2706kW



NDF85/100 Dual Fuel Burner features:

- Burner mounted control panel
- Simple switch changeover between fuels
- 2-stage control (high/low) NDF35-100
- Designed and approved in accordance with the European Standard EN 676 and EN267
- NDFL - Class 'D' oil 5.5 cSt @ 40°C
- NDFR - Class 'G' oil 40 cSt @ 100°C
- Fully closing air damper
- Oil Heater – Burner mounted pumping & heating unit included with burner to heat oil for atomisation for NDFR (Intermittent operation during standby to maintain oil temperature for immediate restart)
- NDFR burners require a pre-heated ring-main oil supply, minimum temperature @ 83°C for Class 'G' oil
- All kW ratings are nett CV
- Suitable for high resistance boilers
- Industry standard components easily available
- Options Extras:
 - Modulating control (Std on NDF100-41 and above)
 - Air inlet silencer (Std on NDF100-41 and above)
 - Acoustic cover (wheel-over)
 - Water level control panel (AOTC)
 - Free-standing pumping & heating unit



For more information on all Nu-way products please visit www.nu-way.co.uk



Enertech Group

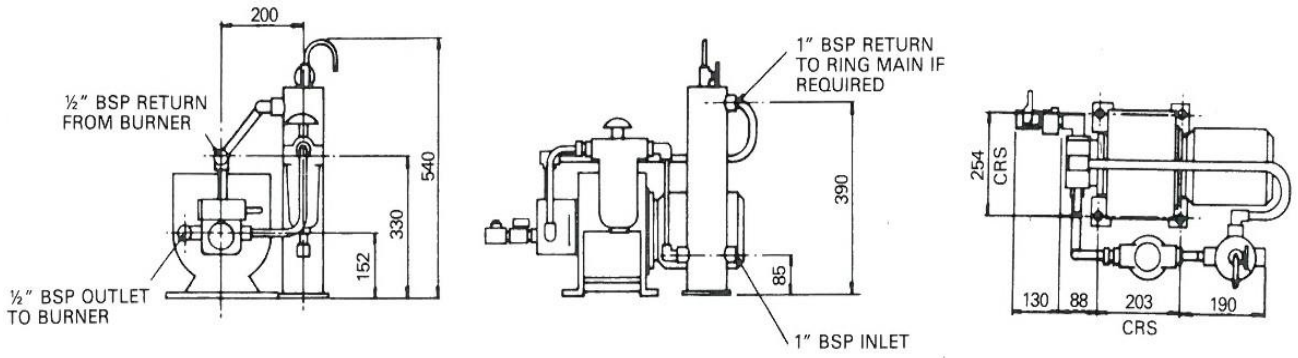
NDFL – DISTILLATE FUEL HIGH/LOW			
Panel and Pump Unit mounted on Burner			
Burner Type		NDFL85-38	NDFL100-38
Capacity	kW	722-2210	766-2706
		85-38	100-38
Fan Motor	V/ph/Hz	380/420 / 3 / 50	380/420 / 3 / 50
	kW	5.5	7.5
Run Current	A/each phase	11.5	14.4
Cable size	mm ²	2.5	4.0
Fuse	A (HRC)	20	25
Pump Motor (separate on Modulation version only)	kW	0.75*	1.5*
Control unit		LFL	LFL
Flame monitoring		UV Cell	UV Cell
Control Options		2 Stage / Modulating	2 Stage / Modulating
Air damper motor		•	•
Pressure gauge		•	•
Noise	@ 1m dBA	92	92
Gross weight	kg	300	300
Packing dimensions	l x w x h (cm)		

- Standard
- Other electrical supply options available on request.

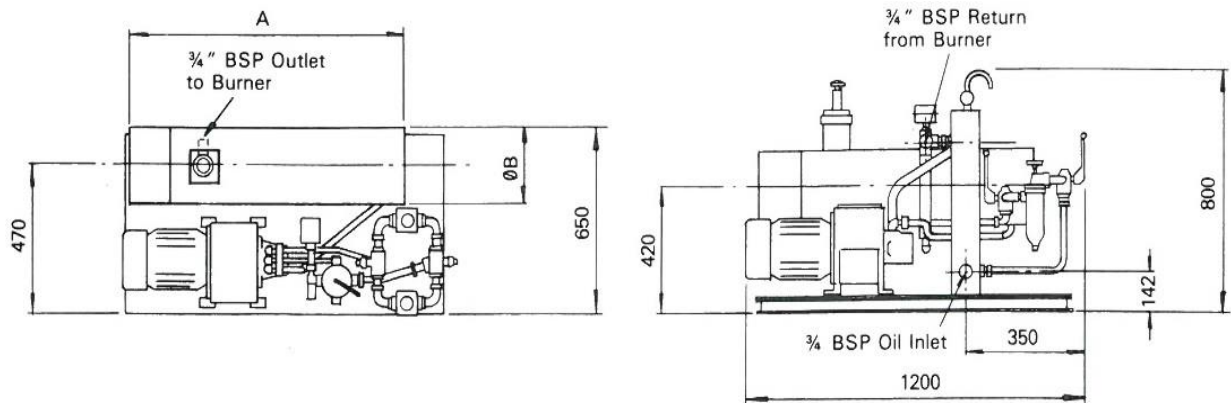
NDFR – RESIDUAL FUEL SLIDING HIGH/LOW			
Separate Panel and Heating & Pumping Unit			
Burner Type		NDFR85-38	NDFR100-38
Capacity	kW	722-2210	766-2706
		85-38	100-38
Fan Motor	V/3/Hz	380/420 / 3 / 50	380/420 / 3 / 50
	kW	5.5	7.5
Run Current	A/each phase	25.0	30.0
Cable size	mm ²	6.0	10.0
Fuse	A (HRC)	40	50
Pump Motor (High/Low)	kW	1.1	1.1
Pump Motor (Modulating)	kW	0.75*	0.75*
Pre-Heater	kW	7.5	9.0
Control unit		LFL	LFL
Flame monitoring		UV Cell	UV Cell
Control Options		2 Stage / Modulating	2 Stage / Modulating
Air damper motor		•	•
Pressure gauge		•	•
Noise	@ 1m dBA	92	92
Gross weight	kg	300	300
Packing dimensions	l x w x h (cm)		

- Standard
- Other electrical supply options available on request.

All data calculated at 415 volts. Motors marked * are 4 pole. All others are 2 pole. Distillate fuel burners are monobloc. Residual fuel burners have separate pumping and heating units. Modulating burners have separate control panel. Motors 5.5kW and over are star delta start. 1 kW = 1.34 HP. Run currents are for oil firing when on gas, this will be reduced to burner motor only unless oil is circulated.



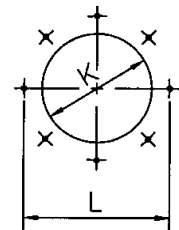
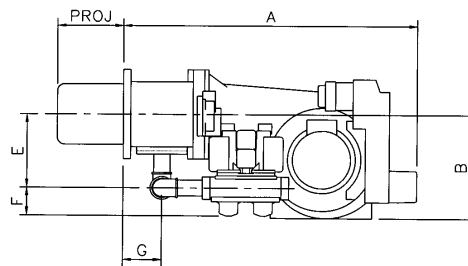
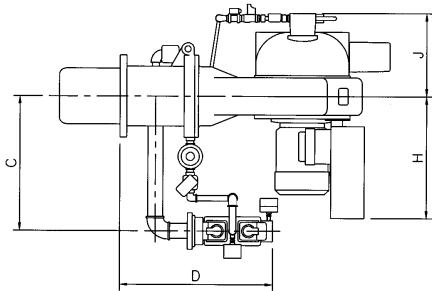
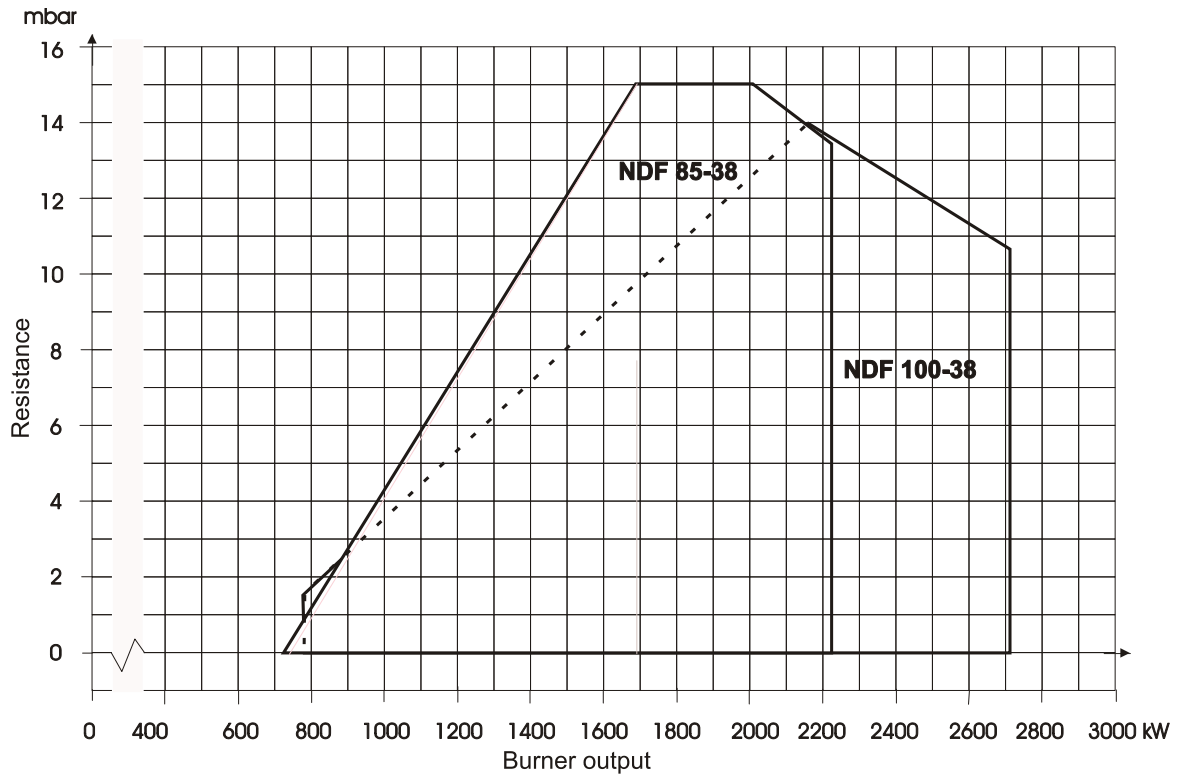
NDFL Modulating: Pump Unit



kW	Dim A	ØB
4.5 & 6.0	692mm	155mm
7.5 & 9.0	684mm	224mm
12.0	586mm	224mm

NDFR Modulating and Sliding High/Low: Pump Unit

BURNER SELECTION CHART



Burner	A	B	C	D	E	F	G	H	J	K	L
NDF85-38	1081	475	920	7235	415	165	141	500	350	280	305
NDF100-38	1081	475	920	735	415	165	141	500	350	280	305

* +60mm if LDU11 valve proving fitted

Enertech Limited, Ten Acres, Berry Hill Industrial Estate,
Droitwich Spa, Worcestershire, WR9 9AQ

tel: +44 (0) 1905 794331 • fax: +44 (0) 1905 794017
email: info@nu-way.co.uk • web: www.nu-way.co.uk

